



Terms of Reference for membership of the Ubuntu Network Assembly

1. Structure of the Assembly

The Ubuntu Network Assembly brings together teacher educators* involved in the integration of Development Education into post primary Initial Teacher Education in the Republic of Ireland. It comprises

- lecturers, tutors and researchers from ITE institutions (teacher education departments in HEIs),
- Development Education practitioners from NGOs,
- Individuals with particular expertise or interest in Development Education, and
- Representatives from appropriate partner organisations.

*For the purposes of the Ubuntu Assembly, the term ‘teacher educator’ is used to describe all educators involved in the student teachers’ development as a professional including those based in Universities and Schools and those who are invited into these settings to support the process.

2. The Purpose of the Assembly

The Ubuntu Network Assembly is a forum for dialogue and sharing, it may be considered a Community of Learning.

- It provides a space for teacher educators to discuss topics of interest that relate to both Development Education and Teacher Education.
- It provides a space for teacher educators to share their experiences and insights into Development Education (and related activities) conducted in member institutions and discuss a range of topics including strategies, methodologies, resources, challenges and ideas, research and lessons learned.
- It seeks and facilitates input from external practitioners and researchers to enrich dialogue and build capacity.
- It identifies opportunities for collaborative research and provides a forum for sharing research.

Such dialogue in a supportive and sharing environment serves to build both capacity and motivation of those involved, while also allowing time for critical reflection on a whole range of issues and perspectives.

In addition,

- The Ubuntu Assembly makes recommendations to the Ubuntu Management Committee and is in a position to endorse the Management Committee to complete work on its behalf (see figure 1 below). Likewise the Management Committee reports developments to the Assembly at each meeting.
- Membership of the Ubuntu Assembly signifies commitment on the part of ITE institutions to integrate Development Education into Initial Teacher Education, and
- Signifies a role in decision making and planning for the Network. This is particularly relevant to ITE institutions who are required to insure that their organisation is accurately represented in Ubuntu work plans and funding proposals.

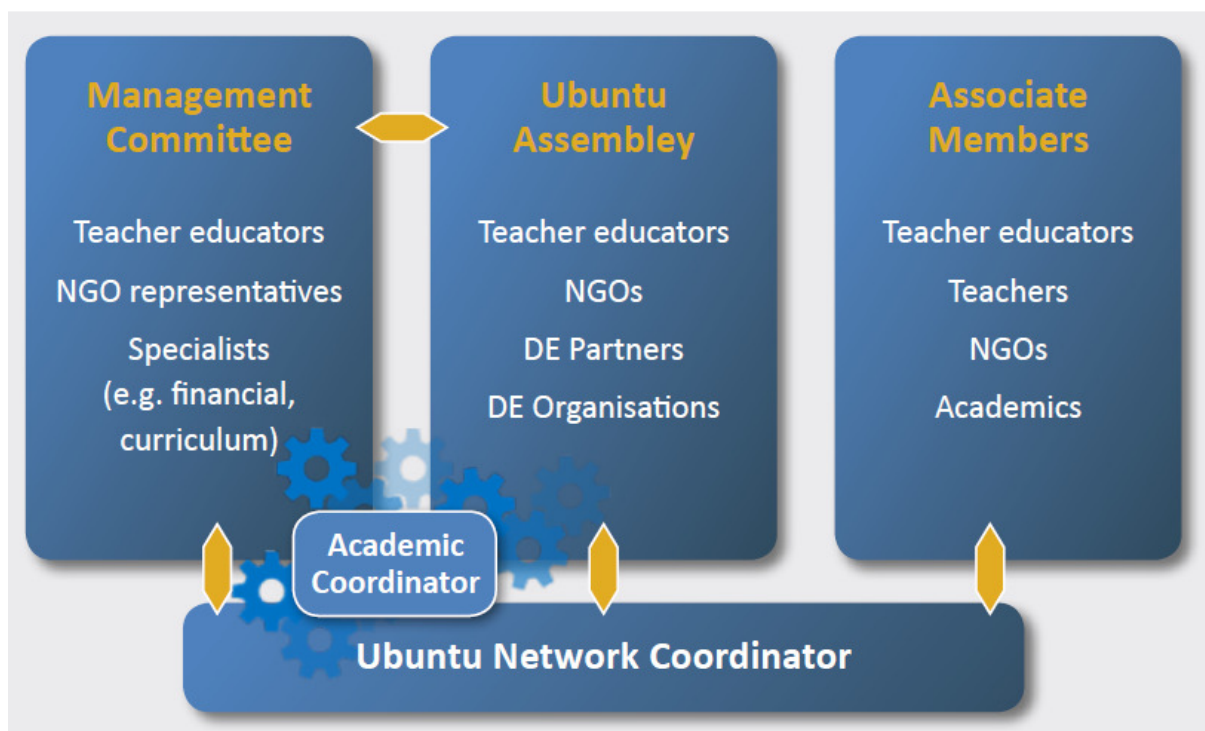


Figure 1 - Ubuntu Network Structure

3. Membership of the Assembly

The following indicates membership categories within the Assembly.

- Initial Teacher Educators from ITE Institutions (the Education Departments of member HEIs) – Crawford College; Dublin City University Institute of Education; GMIT-Letterfrack; Hibernia College; Limerick School of Art and Design; LIT-Tipperary; Maynooth University; the National College of Art and Design; the National University of Ireland, Galway; St. Angela’s College, Sligo; St. Patrick’s College, Thurles; Trinity College Dublin; University College Cork; University College Dublin and the University of Limerick.

- NGOs represented in the Assembly are typically those that have been involved in planning and delivery of Development Education in association with member institutions. They include ECO-UNESCO, Galway One World Centre, Just Forests, KMF Productions, Suas and Trocaire.
- Partner organisations with whom the Ubuntu Network has developed working partnerships, specifically World Wise Global Schools and 80:20.
- The Irish Development Education Association (IDEA) is a member of the Assembly given its roles of capacity building and networking.

4. Membership of the Assembly Quorum

The Ubuntu Network Assembly includes a nominated Quorum. The Assembly Quorum is made up of one representative from each ITE institution (nominated by Heads of Department) and 2 NGO representatives. The Project Coordinator seeks input from quorum members and approval on key documentation (e.g. funding applications, end of year reports).

5. Expectations of the Assembly

Those that receive funds from the Network to complete Development Education projects are expected to attend Assembly meetings to provide an update on their work.

6. Events and Communications

- The Ubuntu Assembly meets in its complete form twice annually – one Dialogue Day (& meeting) and one internal meeting.
- It engages in conference calls when specific decisions must be made, e.g. funding calls, national consultations.
- Ubuntu Assembly members are invited to Development Education events (workshops, lectures, conferences) hosted by fellow members through the Ubuntu Network Coordinator.
- Assembly members receive monthly email newsletters updating members of relevant happenings in the Development Education sector and in member institutions.

Appendix 1: Existing members of the Ubuntu Assembly.

Teacher Educators

	Name	Institution	Quorum Member
In HEIs	Martin Fitzgerald	LIT - Tipperary	Y
	Michael Ryan	LIT - Tipperary	
	Paul Conway	UL	
	Mags Liddy	UL	
	Joanne O'Flaherty	UL	Y
	Carmel Hinchion	UL	
	Tim Murphy	UL	
	Aoife Neary	UL	
	Manuela Heinz	NUIG	Y
	Elaine Keane	NUIG	
	Mary Fleming	NUIG	
	Brenda Gallagher	NUIG	
	Dermot O'Donovan	GMIT-Letterfrack	
	Kevin Maye	GMIT-Letterfrack	
	Maria Finucane	LSAD	Y
	Steven O'Brien	UCC	Y
	Gertrude Cotter	UCC	
	Albert Walsh	Crawford College	Y
	Evelyn Egan Rainey	Crawford College	
	Karen Buckley	Hibernia College	
	Louise Heeran Flynn	Hibernia College	
	Ciaran Sugrue	UCD	Y
	Ann Devitt	TCD	Y
	Elaine McDonald	DCU IoE	
	Majella McSharry	DCU IoE	Y
	Maria Barry	DCU IoE	
	Audrey Bryan	DCU IoE	
	Tony Murphy	NCAD	Y
	Fiona King	NCAD	
	Maria Campbell	St. Angela's College	Y
Helen Maguire	St. Angela's College		
Amanda McCloat	St. Angela's College		
Nigel Quirke Bolt	St. Patrick's College, Thurles		
Angela Rickard	MU	Y	
Celine Healy	MU		
Anthony Malone	MU		
NGOs	Barbara Raftery	Presentation Convent	
	Elaine Nevin	ECO UNESCO	Y
	Tom Roche	Just Forests	
	Peadar King	KMF Productions	Y

Stephen Farley Trocaire
Vicky Donnelly GOWC

Partner/Other Mary McCarthy WWGS
Organisations Tony Daly 80:20/ deved.ie
Elaine Mahon IDEA
Joanne Malone SUAS
Mella Cusack Independent